

# P3 & P4 PARENTS' BRIEFING 2024



# Primary 3 Form Teachers

Class	Year Head: Mr Robert Loo Asst Year Head: Mdm Sally Yeo
3R1	Miss Gloria Lim / Mrs Toh Poh Li
3R2	Mr Lam Y S / Mdm Hairina
3R3	Mr Melvin Au / Miss Wee Wanqing
3R4	Miss Iman / Miss Nur Huda / Mdm Julia Lim
3R5	Mdm Nur Fa'izah / Miss Lam Yi Xin / Mrs Leo T H
3R6	Mr Yazid / Mdm Sally Yeo



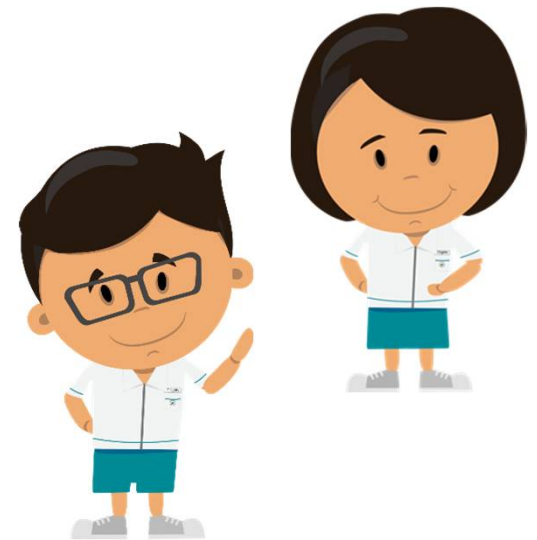
# Primary 4 Form Teachers

Class	Year Head: Mr Robert Loo
4I1	Mr Bryan Chao / Mdm Valerie Koh / Mdm Lynette
4I2	Mdm Seah Wei Shan / Mr William Tock
4I3	Mdm Charmaine Tan / Mr Nash
4I4	Mr Yam H S / Mdm Sheeba
4I5	Mr Yeoh Y K / Mr Michael Goh
4I6	Miss Pauline Leong / Mdm Rahmah

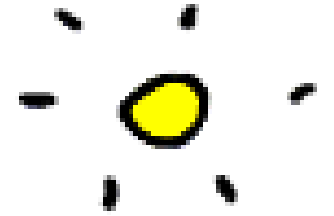


# Programme Outline

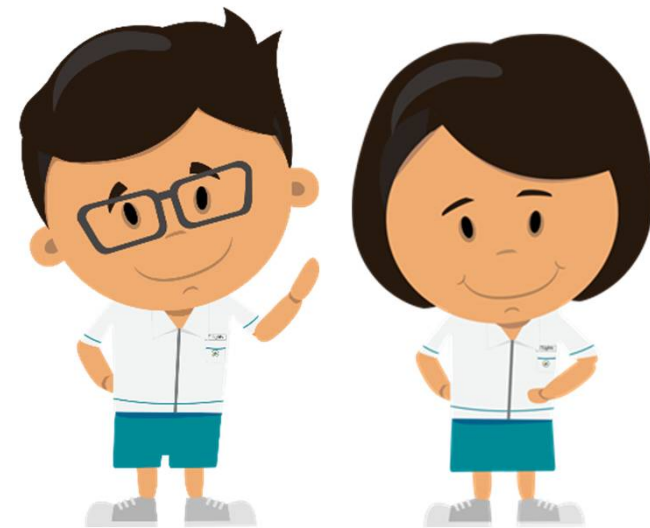
- **Principal's Address**
- **Subject-Based Banding (SBB)**
- **Learning Disposition**
- **Cyberwellness**
- **P3 P4 Level Events and Programmes**



# Programme (Part 2, in class)



- Curriculum Matters (EL, MA, MT & SC)
- Safety Matters
- Positive Classroom
- Home-School Partnership
- Time with FTs



# Parents' Briefing 2024

Principal - Mr Wong



***Gracious School , Life-long Learners***



# Vision

Gracious School, Life-long Learners

# Mission

Nurturing Caring Citizens & Independent Learners



**Gracious School , Life-long Learners**



# Motto

Excellence for Success



***Gracious School , Life-long Learners***





# SCHOOL VALUES: SPRING

**S**elf-Control

**P**erseverance

**R**esponsibility

**I**ntegrity

**N**ational Pride

**G**ratefulness



*Gracious School , Life-long Learners*



# Flourishing E'Lights In A Positive Environment

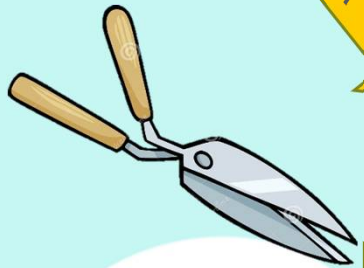


Engaging Curriculum

Exciting ALP & LLP

Interesting CCA

Meaningful VIA



Restorative Practice



Gracious School

Lifelong Learners

Caring Citizens

Independent Learners

SHINE & SPARKLE  
Student Leadership  
Positive Peer Support  
Strong TSR

Self Control ~ Perseverance ~ Responsibility ~ Integrity ~ National Pride ~ Gratefulness

# E'Lights **SHINE**

in our growth journey to  
flourish & influence

**S**hare the power of YET

**H**ave thankfulness in  
my heart always

**I**'m in control of my  
choices and responses

**N**ever give up!  
Learn from mistakes!

**E**ncourage myself  
when things get hard



# E'Lights **SPARKLE**

in helping others!

**S**hare with one another

**P**lay and learn together

**A**cknowledge, Affirm and Appreciate (3A) one another

**R**espect one another

**K**eep a lookout for one another

**L**isten actively

**E**ncourage others with hope & optimism



# Learning for Life Programme (LLP)

- Character-building and resilience
- 3 Outdoor Education components of **Height Confidence, Water Confidence and Navigation**
- Encourage independence and interdependence (Social & Emotional Skills)



**Gracious School , Life-long Learners**



# Learning for Life Programme (LLP)

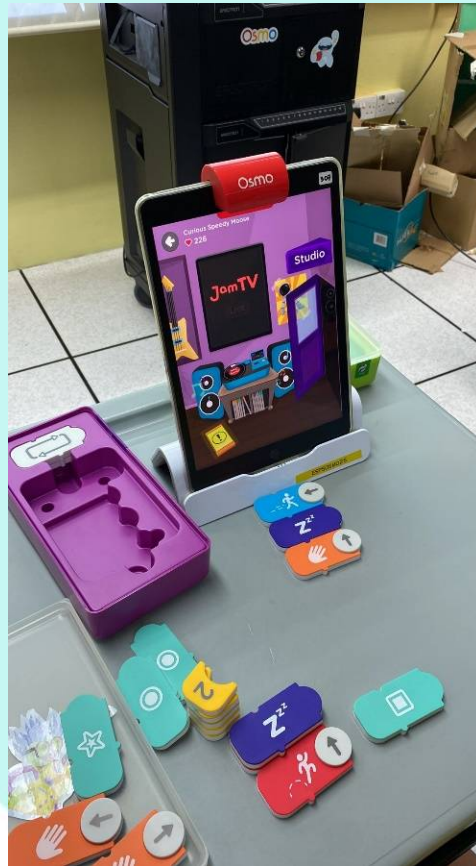
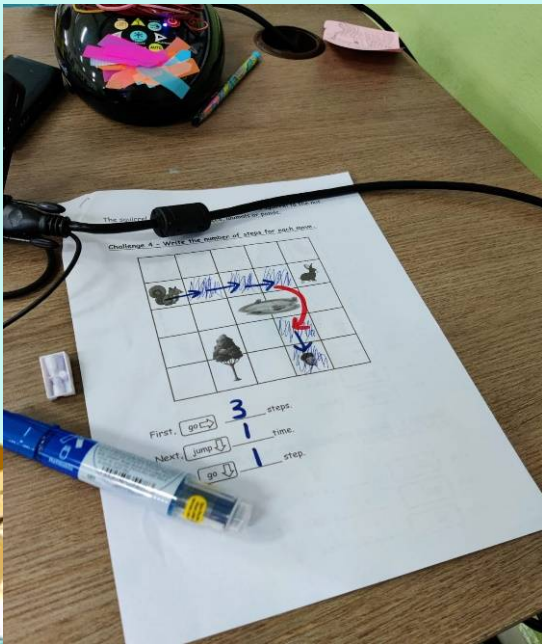
- Level Camps from P3 to P6
- Progressive in nature
- Challenge By Choice



**Gracious School , Life-long Learners**



# Applied Learning Programme (ALP)

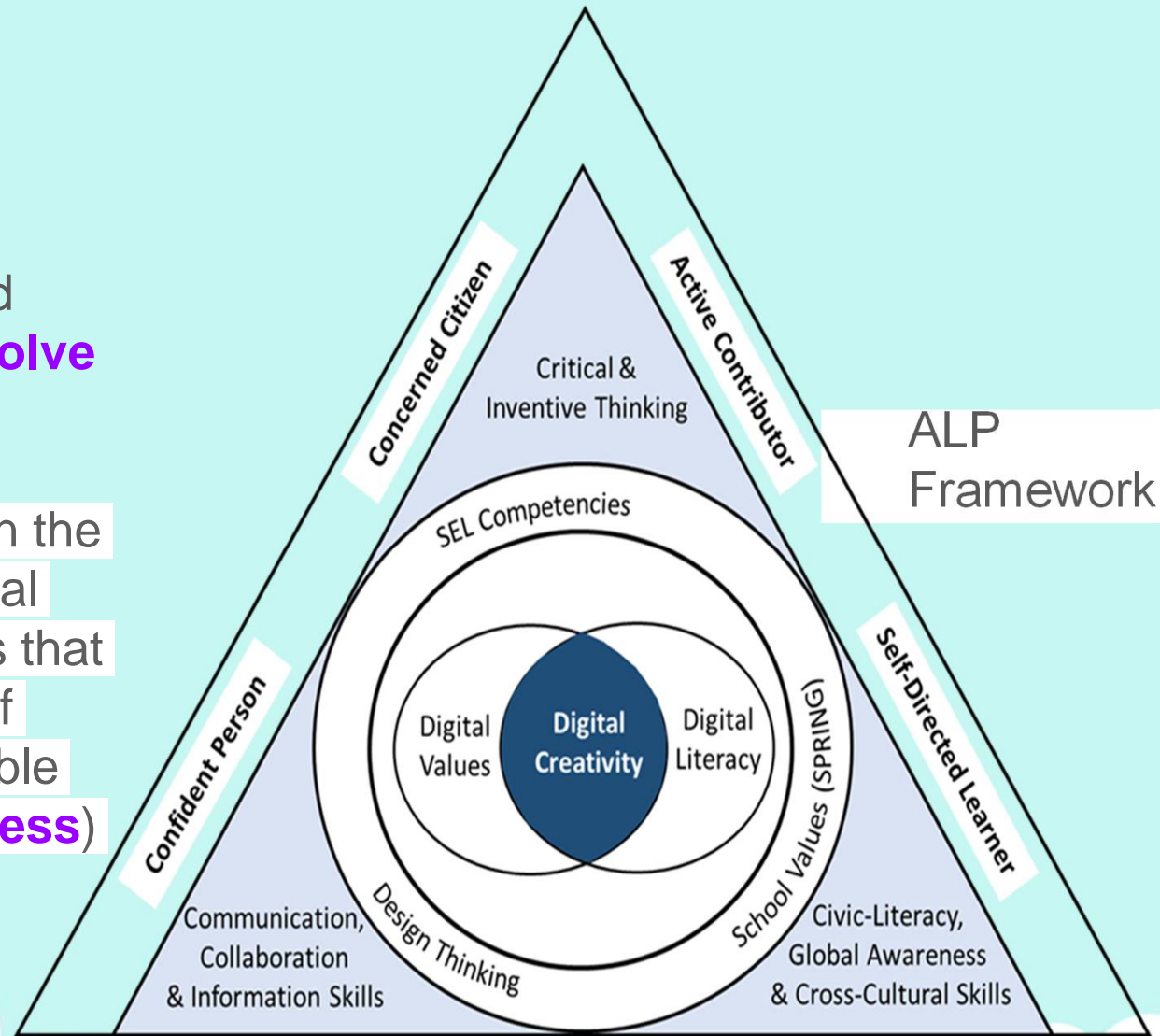


**Gracious School , Life-long Learners**



# Develop Student Competency - ALP

- Deepen **21<sup>st</sup> century competencies**
- Acquire various ICT, computational thinking and Design Thinking skills to **solve real-world problems**
- adopts a spiral approach in the acquisition of various Digital Literacy and Digital Values that reinforce the importance of being a safe and responsible digital users (**Cyber wellness**) through design challenge



**Gracious School , Life-long Learners**





# Baseline ICT Skills

Level	Skills
P1 - P2	Basic PC Operations, Touch typing, Search Engine, Basic MS Word, Basic MS Powerpoint, Google Classroom, Basic Photography, Basic Videography, Stop Motion
P3 - P4	Advanced MS Word, Advanced Powerpoint, Basic MS Excel, Advanced Photography, Emailing
P5 - P6	Advanced MS Excel, Advanced Videography



***Gracious School , Life-long Learners***



# Computational Thinking Skills

Level	Skills
P1 - P2	Osmo coding (Awbie), Osmo coding (Coding Jam)
P3 - P4	Scratch, Code for Fun, Basic Micro:bit
P5 - P6	Advanced Micro:bit, Drones Programming, Makecode Arcade, Figma



***Gracious School , Life-long Learners***



# Cyberwellness

Cyber Wellness @ ESPS aims to look at the positive well-being and developing a healthy cyber culture amongst our students, aligned to MOE's Cyber Wellness Framework.

Topic	P1	P2	P3	P4	P5	P6
Netiquette	✓	✓	✓	✓	✓	✓
Addiction to Games	✓	✓	✓	✓		
Dangers with Cyber Contacts	✓	✓	✓	✓	✓	✓
Cyber bullying			✓	✓	✓	✓
Handling Inappropriate Content				✓	✓	✓
Copyright					✓	✓



**Gracious School , Life-long Learners**



# Home-School Partnership



**Gracious School , Life-long Learners**



# Partner Us

- Parents are the key navigator of their child's growth
- Consult and clarify with the school on matters concerning your child
- Work with your child's teachers
- Take note of information in the Parent Circular in Parents' Gateway (PG)
- Update school on attendance due to illness or travelling



***Gracious School , Life-long Learners***



# Partner Us

- Developing Responsibility in your child:
  - Bringing Students' handbook
  - Noting down homework in handbook and completing them
  - Checking time-table and bringing the right books



***Gracious School , Life-long Learners***



# Encourage Joy of Learning!

- not over-emphasizing just academic performance / results
- focus on your child's learning journey / improvements, rather than compare them to others (Growth Mindset)



## Don't focus only on results

Encourage them to pursue their strengths, interests and try new things.



## Set goals together

Talk about their strengths, abilities and goals and how they can achieve them.



## Don't compare

celebrate their successes instead of comparing with others.



# Give our children the time and space to deepen learning

**I'M NOT WASTING TIME...**




**...I'M PLANNING MY FIRST NOVEL!**

Learning happens in different ways.

Ministry of Education SINGAPORE

**I'M NOT DISTRACTED...**



**...I'M LEARNING HOW PLANES FLY!**

Learning happens in different ways.

Ministry of Education SINGAPORE

**I'M NOT IDLE...**



**...I'M DESIGNING A FUTURE CITY!**

Learning happens in different ways.

Ministry of Education SINGAPORE



**Gracious School , Life-long Learners**





# Communication with Us

- ❑ Student's Handbook
- ❑ Parent-Child-Teacher-Conference (PCTC)
- ❑ Parent Gateway (PG)
- ❑ Class Dojo (office hours before 5:00pm)
- ❑ School Phone No.: **6786 6192**
- ❑ School's email: [esps@moe.edu.sg](mailto:esps@moe.edu.sg)
- ❑ School Website: [www.eastspringpri.moe.edu.sg](http://www.eastspringpri.moe.edu.sg)
- ❑ Instagram : <https://www.instagram.com/eastspringpri/>
- ❑ Teachers' email addresses are also available on the school website
- ❑ We will respond to you within 3 working days



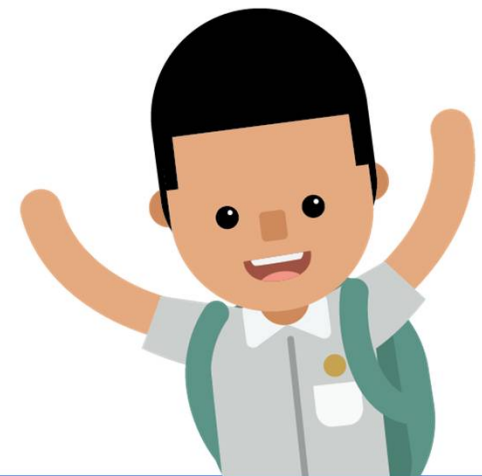


# Subject-Based Banding at Primary Schools



***Gracious School , Life-long Learners***

- Offers students the option of Standard and Foundation Subjects, depending on their strengths.
- Allow students to focus on and stretch their potential in the subjects they are strong in while building up the fundamentals in the subject they need more support in.
- The current PSLE scoring system which started 3 years ago, **will not change** the considerations for deciding on a student's subject combination.



- Schools will continue to recommend based on the following:
  - Student's aptitude, motivation and performance in each subject;
  - Student's ability to cope with a particular subject combination; and
  - Whether the subject combination focuses sufficiently on literacy and numeracy, and facilitates the student's articulation to secondary school and beyond.



- Offering subjects at Foundation level is **not a disadvantage to the students**. It enables them to focus on building up strong fundamentals in these subjects and better prepares them for progression to secondary school.



# SBB in East Spring Primary

- Recommend the most appropriate subject combination based on student's performance.
- Provide students with the breadth in the learning of EL, MA,SC and MTL
- Recognise the challenges faced by some students.
- Will be recommended to take Foundation subjects if he/she is consistently weak in the subject.



# Subject Combinations in East Spring Pri

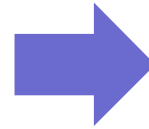
Your Child's Performance	Your child may be recommended
Strong in all 4 subjects and performs very well in MTL	4 standard subjects + HMTL
Strong in all 4 subjects	4 standard subjects
Strong in 3 subjects	4 standard subjects
Strong in 2 subjects or less	4 standard subjects; or 3 standard subjects + 1 other Fdn subject; or 2 standard subjects + 2 other Fdn subjects; or 1 standard subject + 3 other Fdn subjects; or 4 Foundation subjects



# Exercising of Option by Parents at End of Primary 4

## School Recommendation

1. Student's performance at P4
2. Teachers' recommendations



## Option Form

Teachers issue with the Progress Report to the parents

Parents exercise option





# Option to offer Higher Mother Tongue Language (HMTL) in Primary 5

- 1) Meet the school's requirements in EL, MA, SC & MTL
- 2) Teacher's recommendation on students' MTL ability
- 3) Parental option

**At the end of P5, results and teacher's recommendations are the deciding factors if student continues to take HMTL.**



# Movement after Primary 5 if child is noted to face difficulty in coping Standard Subjects

Students may be emplaced to a less demanding subject combination

Monitoring of the student's performance

Professional judgment by the subject teachers



Catering to Your  
Child's Abilities

# SUBJECT-BASED BANDING

FOR  
PRIMARY  
SCHOOLS

Every child is unique, and has different aptitudes, capabilities and talents. Our schools believe in providing a balanced education that caters to the different abilities of each child so that we can prepare him for life.

Subject-based Banding (Pri) was introduced as a refinement to the streaming process to help each child realise his potential, based on his strengths and needs.

## WHAT IS SUBJECT-BASED BANDING (PRI)?

Subject-based Banding (Pri) provides greater flexibility for your child by offering him the option of a combination of standard and foundation subjects, depending on his strengths. For example, if he excels in English and Mother Tongue but needs more support in Mathematics and Science, he may choose to take the first two subjects at the standard level and the others at the foundation level.

Such a choice will allow your child to focus on and stretch his potential in the subjects that he is strong in while building up the fundamentals in the subjects that he needs more support in.

## SUBJECT-BASED BANDING (PRI) AND SECONDARY SCHOOL ADMISSION: HOW ARE THEY RELATED?

Progression to secondary level depends on your child's PSLE score. The different expectations of standard and foundation subjects will be taken into account when your child's PSLE score is calculated. If he excels in his subjects, he will have the opportunity to pursue higher-level options at secondary school.

Offering subjects at the foundation level is not a disadvantage to your child. It enables him to focus on building up strong fundamentals in these subjects and better prepares him for progression to secondary school.



## WHAT ARE SOME CHOICES AVAILABLE?

If your child (for P4 exam)	Your child may be recommended to take
Passes all 4 subjects and performs very well in Mother Tongue Language	4 standard subjects + Higher Mother Tongue Language
Passes all 4 subjects	4 standard subjects
Passes 3 subjects	4 standard subjects
Passes 2 subjects or less	4 standard subjects; or
	3 standard subjects + 1 other foundation subject; or
	2 standard subjects + 2 other foundation subjects; or
	1 standard subject + 3 other foundation subjects; or
	4 foundation subjects

## HOW DOES SUBJECT-BASED BANDING (PRI) WORK?

### @ PRIMARY 4

Student sits for school-based examinations

School recommends a subject combination based on the student's results.

Parents fill up an option form indicating the preferred combination.

### @ PRIMARY 5

Student takes subject combination chosen by parents

English Language, Mathematics, Science and Mother Tongue Language are available at standard and foundation levels.

Higher Mother Tongue Language is also available.

School assesses student's ability to cope with the current subject combination at the end of the year. Adjustments to the number of standard and foundation subjects can be made, if necessary.

### @ PRIMARY 6

Student takes subject combination decided by his school and sits for the Primary School Leaving Examination (PSLE) at the end of Primary 6.

# Assessment Matter

---



***Gracious School , Life-long Learners***

---

---

# Types of assessment

Formative  
assessment  
(FA)

Assessment that is carried out to provide timely feedback to adjust ongoing teaching and learning in order to improve students' achievement of intended instructional outcomes. Marks will not be awarded for such assessment and they do not count towards the subject grade. For example: Reading Aloud, Journal Writing etc.

Weighted  
assessment  
(WA)

Assessment for which marks attained count towards the subject grade. For example: Listening Comprehension, Topical Test etc.

Standardised  
assessment

Assessment that is carried out, scored and interpreted in a consistent manner within the school. For example: End-of-Year (EYE)



	Semester 1		Semester 2	
	Term 1	Term 2	Term 3	Term 4
<b>Primary 3</b>	Formative Assessment (FA)			
	Weighted Assessment (WA)- 10%	Weighted Assessment (WA)- 15%	Weighted Assessment (WA)- 15%	EYE- 60%
<b>Primary 4</b>	Formative Assessment (FA)			
	Weighted Assessment (WA)- 10%	Weighted Assessment (WA)- 15%	Weighted Assessment (WA)- 15%	EYE - 60%

Note:

1. The above assessment structure is meant for English, Mathematics, Science and Mother Tongue Languages (CL, ML & TL).
2. All Formative Assessments (FA) are not weighted.
3. Details for each weighted assessment has been sent via Parent Gateway (PG)
4. Scope for EYE will be loaded up nearer the date.



***Gracious School , Life-long Learners***

# How do we monitor students' progress?

- Even with the removal of mid year exam for P3 to P6, teachers will continue to assess their students. Eg: daily work, FAs and WAs
- Parents will be kept informed of the child's progress. Eg: PCTC, Class Dojo etc



# Learning Dispositions



---

***Gracious School , Life-long Learners***

---

---





# Observing students' demonstration of positive learning disposition in East Spring Primary School

“Teachers can observe the demonstration of positive traits in **students** like diligence, curiosity, collaboration and enthusiasm through daily lessons and learning activities that demonstrate a student's learning orientation. It is **not as quantitative and standardised as school-based examinations, but qualitative judgement is a fact of life**, and we can apply that on EMB and GPA for young students who just entered the school system.”

- Minister Ong Ye Kung, in 2018



***Gracious School , Life-long Learners***

Learning Dispositions	Actions
<ul style="list-style-type: none"> <li>▪ <b>Joy of Learning</b></li> <li>▪ <b>Enthusiasm</b></li> <li>▪ <b>Diligence</b></li> <li>▪ <b>Resilience &amp; Grit</b></li> <li>▪ <b>Open-Mindedness</b></li> </ul>	<ul style="list-style-type: none"> <li><input type="checkbox"/> Showing passion and enjoyment in learning</li> <li><input type="checkbox"/> Showing great interest in learning new things</li> <li><input type="checkbox"/> Asking questions to deepen understanding</li> <li><input type="checkbox"/> Showing curiosity in learning new knowledge</li> <li><input type="checkbox"/> Focusing energy on accomplishing tasks to the best of his/her ability</li> <li><input type="checkbox"/> Evaluating work and understanding the importance of accuracy &amp; precision of the tasks</li> <li><input type="checkbox"/> Staying on task no matter how difficult it is</li> <li><input type="checkbox"/> Seeking and exploring new ideas and possibilities</li> </ul>



- School will consider students' learning dispositions (e.g. joy of learning, diligence, resilience and grit, enthusiasm and open-mindedness), instead of academic performance for Edusave Academic Award.



- Edusave Merit Bursary: P1 and P2 students who display positive learning dispositions consistently.
- Good Progress Award: P2 and P3 students who have made significant improvement in learning dispositions.



# Attendance

- If your child is unwell, please bring him/her to see a doctor to obtain a Medical Certificate
- Do update the Form Teachers in Class Dojo on his/her absence for the day
- Only 5 parents letter per semester, reason(s) by parents will only be accepted on a case by case basis**
- Refrain from taking leave (eg: return to hometown, staycation) during term time



# Punctuality



- ❑ Our students are expected to be in the **classroom** by **7.30 am** for flag-raising ceremony.
- ❑ Students may receive a **‘Letter of Warning’** and **disciplinary actions will be taken** should the late-coming persist.



# What is Cyber Wellness?

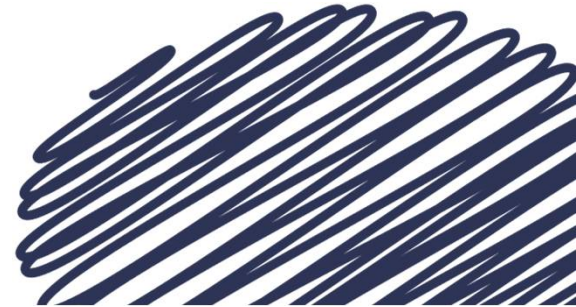


- **Cyber Wellness is about our students being able to navigate the cyber space safely.**
  - **This is done through our curriculum which aims to equip students with the knowledge and skills to harness the power of Information and Communication Technology (ICT) for positive purposes, maintain a positive presence in cyberspace and be safe and responsible users of ICT.**



# What are the school rules on digital device use?

- Use of cellular phones to contact parents/caregivers only after school at the canteen and foyer
- All digital devices should be switched-off during curriculum hours and after school programmes



# How can parents help our children develop good digital habits?

- Good digital habits start from the home. Supporting our children early in this process will help them greatly as they grow older.
- Based on MOH's Guidance on Screen Use for 7-12 year olds, parents are encouraged to:
  - Use parental control settings to monitor and ensure children access to age-appropriate content;
  - Develop a timetable or screen use agreement to balance screen time and family bonding and;
  - Avoid screen use during mealtimes and one hour before bedtime.
- Co-viewing with our children is also important. Knowing what our children are viewing will create more opportunities for conversations.

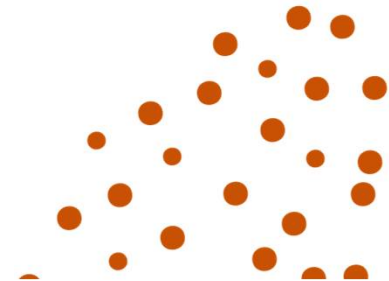
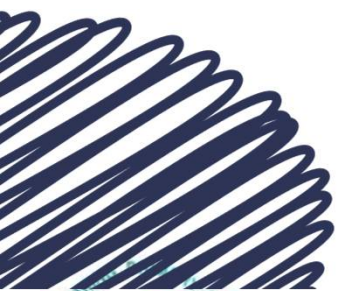


For more information, you can scan here for MOH's Guidance on Screen Use



# How to have open communication with our children?

- Open communication is critical in building a positive-child relationship.
- Talk to our children about their online activities in everyday conversations:
  - Did you enjoy the video that we watched together just now? What did you like/not like about the video?
  - Have you seen or heard anything online that bothered or worried you? Tell me about it.



# How to have open communication with our children?

- Create a safe environment for our children to express their thoughts and feelings.
  - Find a place where your child is more comfortable to talk
  - Teach your child to use words to describe different emotions, e.g. “I see you’re frowning, are you feeling sad?”
- Let them know that you are there for them when they need support, care or help.
  - Regularly show interest in their thoughts and feelings.
  - Listen to understand, make eye contact, nod to show you have heard them.



Parenting Instagram live on  
The HeART of Conversation



---

***Gracious School , Life-long Learners***

---

# P3 and P4 Level Programmes



---

***Gracious School , Life-long Learners***

---

---

# Term 1 Calendar

Programme	Level	Dates
Parents' Briefing	P3 and P4	19 Jan
SwimSafer	P3	From 8 Jan (8 sessions)
Remedial Classes	Selected Students	From T1 Wk3 16 Jan onwards
CCAs commence		From 17 Jan
STEAM (Math & Sci Enrichment)	P3 (Selected)	From 30 Jan (5 sessions)
Social Emotional Learning Programme	P3 (Selected)	From 20 Feb (2 sessions)



# Term 1 Calendar

Programme	Level	Dates
Annual Health Check	All Levels	From 29 Feb to 8 Mar
P4 Lorong Buangkok (IPRS)	P4 (IPRS & their buddies)	7 Mar



# Student Details Form (SDF) with Medical Condition declaration.

- The Ministry of Education (MOE) would like to request for an update of your information and your child's/ward's information via the Student Details Form (SDF) for the purpose of providing educational services to your child/ward in MOE schools.
- **BOTH** parents/legal guardians are requested to login to the SDF portal via the URL below using your Singpass account to submit your information and information of your child/ward:
- <https://pg.moe.edu.sg/forms/sdf>
- The SDF portal can be accessed via desktop computers or mobile devices such as laptops and mobile phones. We seek your kind assistance to complete the submission by 31 Jan 2023.

# EVERY CHILD MATTERS TO US

*Everyone Makes a Difference*



**Let's work together!**

**Gracious School , Life-long Learners**



For any clarification, please contact

Mr Robert Loo

Year Head (Middle Primary)

[loo\\_leong\\_tuan@schools.gov.sg](mailto:loo_leong_tuan@schools.gov.sg)

Mrs Sally Koh

Asst Year Head (Middle Primary)

[yeo\\_xueli\\_sally@schools.gov.sg](mailto:yeo_xueli_sally@schools.gov.sg)





## Questions

## Response

How is CCA selection carried out?

We have P2 CCA sampling for the P2 students nearing end of the year to help students understand and better choose their CCAs in P3. And in P3, students are given 3 choices in the CCA Option Form. We try our best to allocate them to their CCA of preference within the 3 choices.



## Questions

## Response

SBB from Primary School to Secondary School

As mentioned SBB for Pri Sch takes place at the end of Pri 4, and it can apply to all 4 core subjects. When a student progresses to Sec Sch, there will be SBB and this year 2024, full implementation has been rolled out. SBB, for even humanities subjects, will be carried at Sec 2 as well.

Will parents be informed of dates in advance of the weighted assessments for all subjects for P3 since there is no MYE?

We had sent out via PG a letter to parents sharing on assessment matters in week 3. We will also inform students and parents the exact dates for WAs when possible, as there may be some changes to time-table.



**Gracious School , Life-long Learners**

